



Dear Parents,

We will start the distribution of the Uniforms and Books from



**AUGUST 24, 2020**

from **SATURDAY** to **THURSDAY**



**8:30 AM - 2:45 PM**

Please collect the STAMPED Uniform and Book Form from the Account Department.

You can collect the form starting from AUGUST 18, 2020.

Please make your appointment with us.

You can contact the following number via whatsapp/ phone call:

KG1 to KG2

055 585 5330

Gr 1 to Gr 5

056 902 8646

Gr 6 to Gr 12

052 271 2401

## UNIFORM DISTRIBUTION

Please, check the appropriate sizes of your children from the attached documents, (Please click the below link). Take note of the sizes because you will use them to fill in the uniform distribution form.

### NOTE:

1. There will be no fitting room because of our safety measures against COVID-19.
2. We can't provide the uniform and books without an appointment.
3. Please make sure the girls' skirt reaches below the ankle. Shortening the skirt above the ankle is not allowed.





أولياء الأمور الأعزاء،

سنبدأ في توزيع الزي المدرسي والكتب اعتباراً من:

من الساعة 8:30 صباحاً  
حتى 2:45 مساءً



24 أغسطس 2020  
(من السبت إلى الخميس)



يرجى استلام استمارة الزي.  
يمكنك القدوم الى المدرسة لاستلام الاستمارات المطلوبة بدءاً من 18 أغسطس 2020.

يرجى الاتصال او التواصل عن طريق الواتساب وتحديد موعدك معنا.  
يمكنك الاتصال على الارقام التالي:

KG1 to KG2 055 585 5330

Gr 1 to Gr 5 056 902 8646

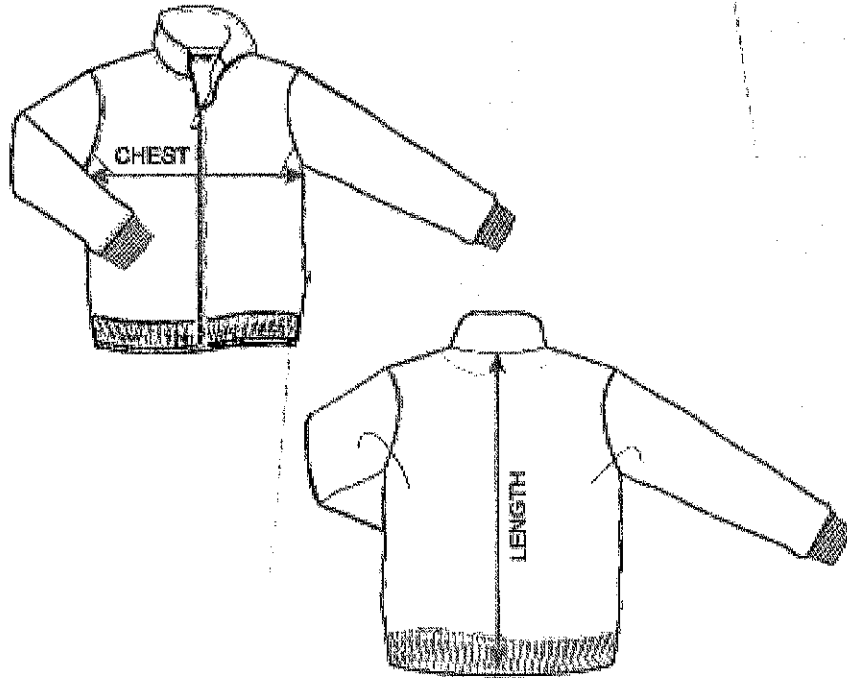
Gr 6 to Gr 12 052 271 2401

## توزيع الزي

نرجو منكم الاطلاع على الوثائق المرفقة (نرجو الضغط على الرابط ادناه) الذي يحتوي على دليل لمقاسات الزي. سجل رقم مقاس الزي المناسب لابنك / ابنتك لكي تستخدمه لملء استمارة الزي.

ملحوظة:

- 1 - لن يسمح للطلاب بقياس الزي وذلك بسبب تدابير السلامة ضد فيروس كورونا.
- 2 - لن نستطيع خدمتكم بدون موعد مسبق لاستلام الكتب والملابس.
- 3 - يرجى مراعاة طول التنورة بالنسبة للطالبات ليكون ما دون الكاحل. التقصير لما يصل فوق الكاحل غير مسموح.



Winter Jacket Boys & Girls

KG WINTER JACKET Plover Measurement chart

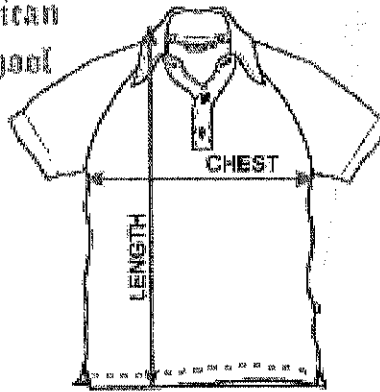
CHEST →

Size:	2	3	4	5	6	7	8	9	10				
Waist Relaxed	28	30	31	32	33	34	35	36	37				
Length	18	19	20	21	21.5	22	23	23.75	24.25				

GRI-12 WINTER JACKET Plover Measurement chart

CHEST →

Size:	11	12	13	14	15	16	17	18	19	20	22	24	
Waist Relaxed	38	39	40.5	42	44	45	46.5	48	50	52	53	56	
Length	25	25.75	26.5	27	28	28.5	29.25	30	30.75	31.25	32	32.5	



**PE Polo for Girls**

**KG PE T-SHIRT Plover Measurement chart**

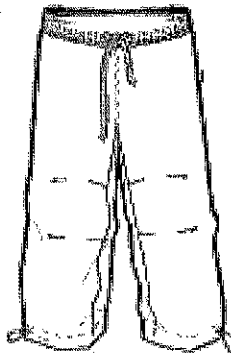
Size:	2	3	4	5	6	7	8	9	10			
Waist Relaxed	25.25	27	28	29	30	31	32	33	34.25			
Length	20.75	21.5	22	22.5	23	23.75	25	26	26.75			

CHEST →

**GR1-12 PE T-SHIRT Plover Measurement chart**

Size:	11	12	13	14	15	16	17	18	19	20	22	24
Waist Relaxed	35.5	36.5	37.75	38.5	39.5	40.25	41	42	43	44	46.5	49
Length	27.25	27.25	28	29.75	29.25	29.75	31	31.5	32	32.5	33.5	34.5

CHEST →



**PE Trousers Boys & Girls**

**KG PE TROUSER Plover Measurement chart**

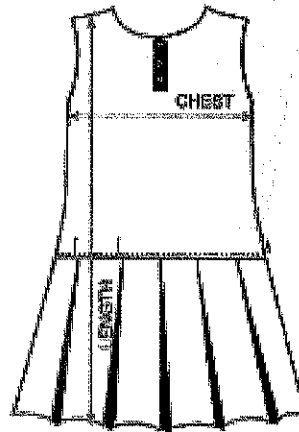
Size:	2	3	4	5	6	7	8	9	10			
Waist Relaxed	18	19	20	21	22	23	24	25	26			
Hip	28	29	30	31	33	34	35.5	37	38.5			
Length	24.25	25.5	27.25	28.5	30.75	32.25	33.75	36	36.75			

CHEST →

**GR1-12 PE TROUSER Plover Measurement chart**

Size:	11	12	13	14	15	16	17	18	19	20	22	24
Waist Relaxed	27	28	29	30	31	32	33	34	35	36	38	40
Waist Extended	40	41	42	43	44.5	45.5	47	48	49.5	51	52	54
Length	37.75	38.75	40	41.25	41.75	42	43	44.25	45	45.5	46	46.5

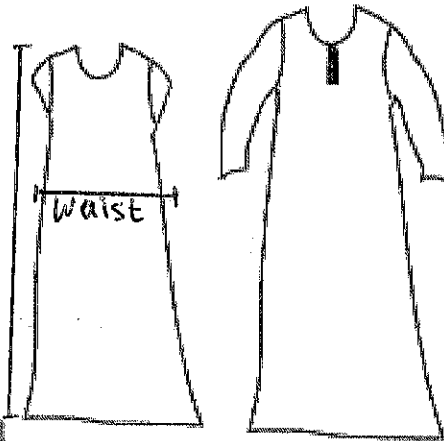
CHEST



**Pinafore for KG Girls**

KG MARIYOOL Plover Measurement chart												
Size:	2	3	4	5	6	7	8	9	10			
Waist Relaxed	26	27	28	29	30	31	32	33	34			
Length	24.5	25.5	27.5	30	32	34	36.5	38.5	39.5			

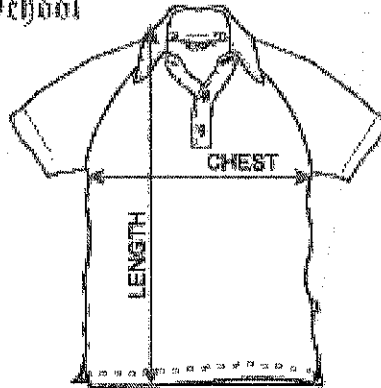
CHEST →



**Long Dress & Abaya**

Long Dress & Abaya Plover Measurement chart												
Size:	2	3	4	5	6	7	8	9	10			
Waist Relaxed	27	28	29	30	31	32.5	34	35	36			
Length	41	42	43	44	45	46	48	49	52.5			

Long Dress & Abaya Plover Measurement chart												
Size:	11	12	13	14	15	16	17	18	20	22		
Waist Relaxed	38	40	42	43	44	45	46	47	49	51		
Length	54	55.5	57	58	59.5	60	61	61.5	62	62		



**PE T Shirt + Blue T Shirt for Boys**

**KG PE T-SHIRT Plover Measurement chart**

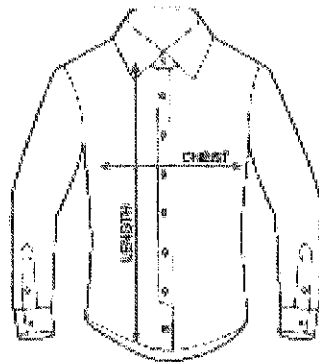
CHEST →

Size:	2	3	4	5	6	7	8	9	10				
Waist Relaxed	25.25	27	28	29	30	31	32	33	34.25				
Length	18.75	19.5	20	20.5	21	21.75	23	24	24.75				

**GR1-12 PE T-SHIRT Plover Measurement chart**

CHEST →

Size:	11	12	13	14	15	16	17	18	19	20	22	24
Waist Relaxed	35.5	36.5	37.75	38.5	39.5	40.25	41	42	43	44	46.5	49
Length	25.25	26.25	27	27.75	28.25	28.75	29	29.5	30	30.5	31.5	32.5



**KG Girls Shirt**

**KG GIRLS SHIRT Plover Measurement chart**

CHEST →

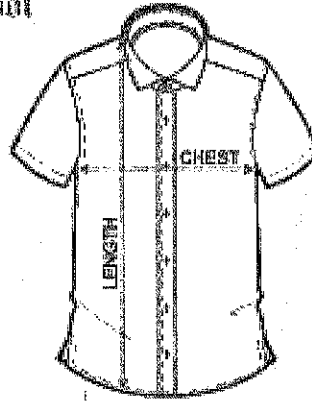
Size:	2	3	4	5	6	7	8	9	10				
Waist Relaxed	27	28	29	30	31	32	33	34	35				
Length	16.5	17.5	18.5	19	20.5	21	22	23	24				

**GR1-12 GIRLS SHIRT Plover Measurement chart**

CHEST →

Size:	11	12	13	14	15	16	17	18	19	20	22	24
Waist Relaxed	40	41	42	43	44	44.5	45	45.5	46	46.5	47	48.5
Length	25	26	26.5	27	27.5	28	28.5	29	30	30.5	31	31.5

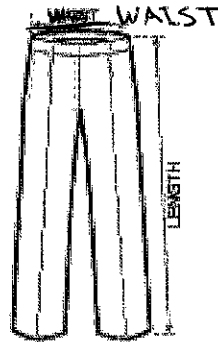




**Check Shirt for Boys**

KG BOYS SHIRT Plover Measurement chart												
Size:	2	3	4	5	6	7	8	9	10			
CHEST → Waist Relaxed	27	28	29	30	31	32	33	34	35			
Length	17	18	19	19.5	20.5	21.5	22	23	24			

GR1-12 BOYS SHIRT Plover Measurement chart												
Size:	11	12	13	14	15	16	17	18	20	22	24	
CHEST → Waist Relaxed	36	37	38	39	41	42	44	46	48	50	52	
Length	24.5	25.5	26.5	27.5	28	28.5	29	29.5	30	32	34	



**Boys Trousers**

KG BOYS TROUSER Plover Measurement chart												
Size:	2	3	4	5	6	7	8	9	10			
Waist Relaxed	17	18	19	20	21	22	23	24	25			
Waist Extended	23.5	24.5	25.5	26.5	27.5	28.5	29.5	31	32			
Length	22.75	24	25.5	27	28.25	29.5	33.25	33.25	35			

GR1-12 BOYS TROUSER Plover Measurement chart												
Size:	11	12	13	14	15	16	17	18	20	22	24	
Waist Relaxed	26	27	28	29	30	31	32	33	36	38	40	
Waist Extended	34	35	36	37	38	39.5	41	42.5	44.5	46.5	48	
Length	36.5	37.5	38.5	39.5	40.5	41	42	43.5	44	45	45.5	